

# DFF Information Meeting Call for proposals 2019/2020

**Gunvor H. Platou, Kasper Ø. K. Simonsen**  
Office of Independent Research Fund Denmark

# Agenda

## 1. Welcome and introduction

The excellent application – insights from the council chairs (video)

## 2. DFF's funding instruments and success rates

## 3. How is an application processed

## 4. Questions in plenary

## 5. Individual questions

# Insights from the council chairs

Hanne Frøkier  
(DFF | Technology &  
Production Sciences)



Søren Serritzlew  
(DFF | Social Sciences)



Kirsten Grønbaek  
(DFF | Medical Sciences)



Dorthe Gert Simonsen  
(DFF | Humanities)



Michael Møller Hansen  
(DFF | Natural Sciences)



FAQ -  
Watch video  
[https://www.youtube.com/  
watch?v=bhGmQI-4XRw](https://www.youtube.com/watch?v=bhGmQI-4XRw)

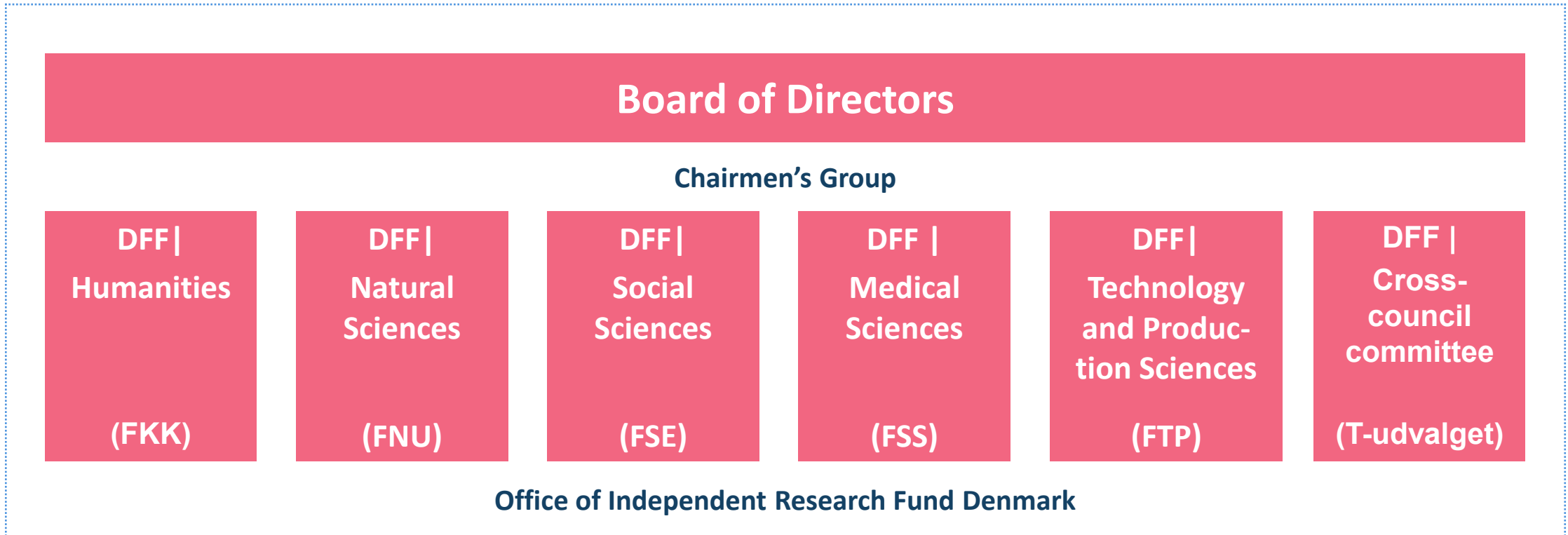


# What we do?

- DFF supports independent research based on
  - researchers' own ideas
  - within and across all main fields of science
  - to researchers at all career stages
  - in order to strengthen the international competitiveness of Danish research.
- Thematic research

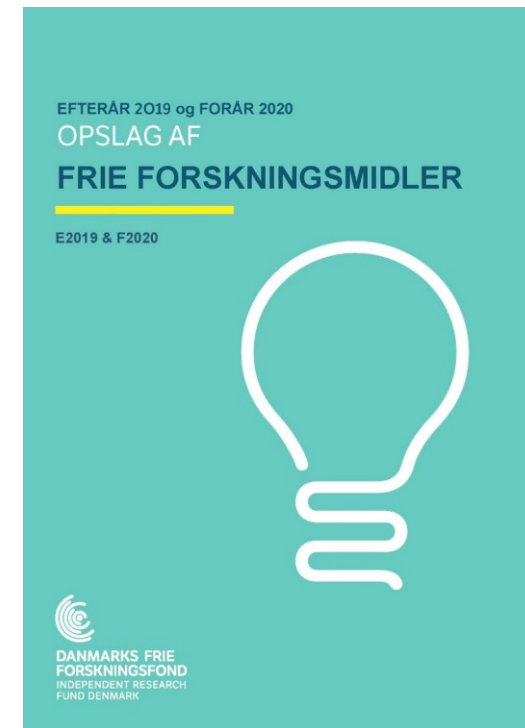


# Organisational structure of DFF



# What's new in this year's call?

- New assessment criterium: Is it plausible for the applicant to be able to handle the project applied for at the same time as the applicant's other research and management tasks?
- DFF-International Postdoctoral Grant: You can now only apply for a bench fee *if* the foreign institution accepts to administrate the grant.
- Pre-graduate scholarship | Medical Scicences: The project period has been extended to 6-12 months



# Main research instruments

	DFF-Research Project1	DFF-Research Project2	Sapere Aude: DFF-Starting Grant	DFF-International Postdoc	Non-university research education (PhD)
Deadline	October 1 <sup>st</sup> -5 <sup>th</sup> 2019	October 1 <sup>st</sup> -5 <sup>th</sup> 2019	March 26 <sup>th</sup> 2020	November 5 <sup>th</sup> 2019 March 26 <sup>th</sup> 2020	March 26 <sup>th</sup> 2020
Budget (exc. OH)	Up to 2 million DKK	2 mil. to 4.3 million DKK	Up to 4.3 million DKK	1,3 million DKK + 50,000 for each accompanying partner/child per annum	Up to 1.8 million DKK
Applicant requirements	<u>Typically</u> 3+ years independent research experience after obtaining PhD	<u>Typically</u> 5+ years independent research experience of <u>high international level</u> after obtaining PhD	PhD obtained within last 8 years; original research at a high international level; <u>management experience and mobility is a plus</u>	PhD awarded from Danish institution within 3 years (or completion up to 6 months after the call's deadline)	MA and confirmation from non-university research institutions covered by instrument
Length of project	<u>Typically</u> 3 years, 4 years if PhD student involved	Up to 4.5 years	Up to 4 years	2 years	3 years
Success rate 2018	16 %	14 %	11 %	21 %	21 %

# Main research instruments

	DFF-Research Project1	DFF-Research Project2	Sapere Aude: DFF-Starting Grant	DFF-International Postdoc	Non-university research education (PhD)
Average age of grant recipient	48 years	48 years	37 years	32 years	35 years
Recipients aged 29 or younger (2018)	0	0	0	1	3
Age 30-39 recipients (2018)	37	7	28	23	5
Age 40-49 recipients (2018)	81	32	6	1	1
Age 50-59 recipients (2018)	40	26	0	0	1
Recipients aged 60 or older (2018)	27	4	0	0	0



# Calculating PhD age

Some instruments set requirements as to the maximum time passed since conferral of PhD degree:

- 3 years for international postdoc applicants
  - 8 years for Sapere Aude applicants
  - 4 years for *embedded* postdocs in research projects and Sapere Aude projects.
- 
- The PhD age is calculated from the date on the PhD diploma until the application deadline.
  - Leaves of absence and a few very specific scientific/academic circumstances will be taken into account.
  - For parental leave: 1 week of leave = 2 weeks of deduction.

Same rules apply for unnamed embedded candidates.



# Online form and filling out a budget

- Start early! In addition to the appendices mentioned in the call, you are required to provide
  - Description of ethical considerations
  - Description of gender considerations
  - Comprehensive lists of grants and grant applications
- Remember to inform us if you receive money for your project from elsewhere
- Get support from your local research support unit



# What expenses does DFF support?

## In general

- Salaries for personnel (VIP and TAP)
- Equipment (exceeding DKK 500,000 per item, excluding overhead/administrative expenses)
- Operating expenses (including equipment up to DKK 500,000 per item)
- Overhead

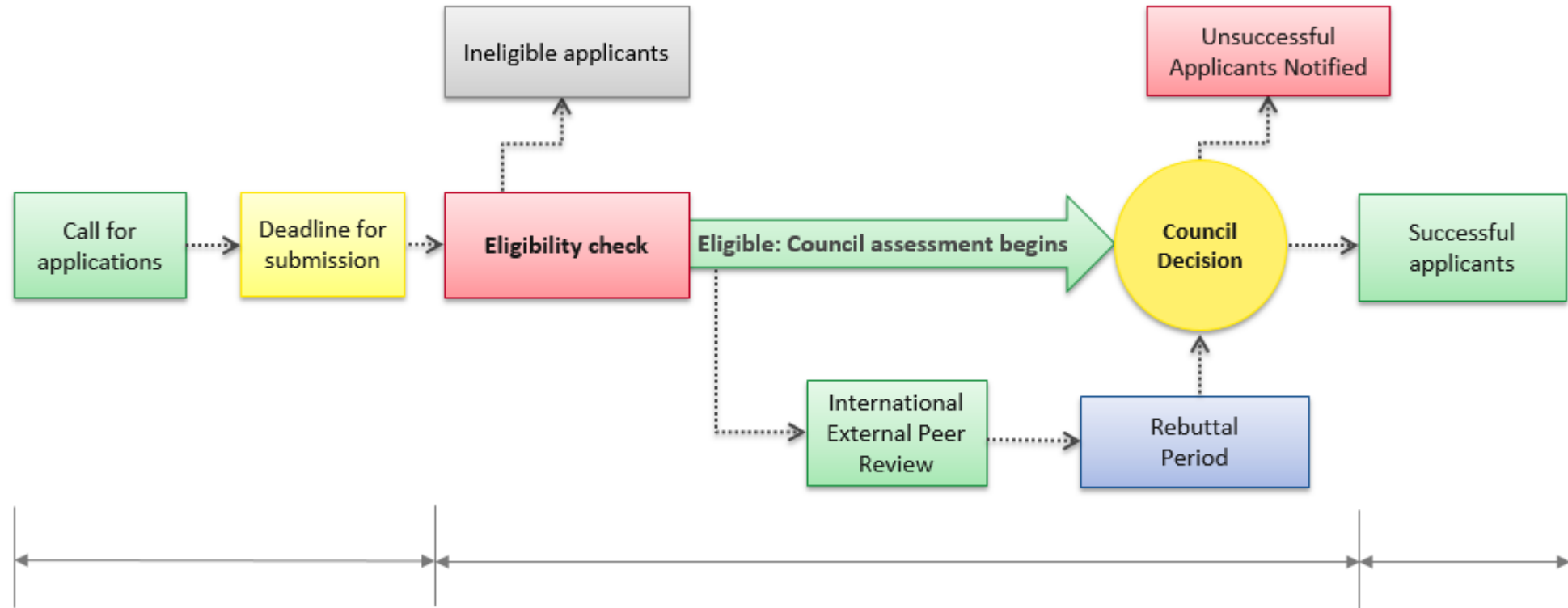
## Specific exceptions

- DFF does not fund expenses towards open access and items covered by overhead

## Make sure

- that you argue for all expenses; the Council can cut all unspecified expenses
- “Is there proportionality between the project’s costs and the expected scientific output?” – can lead to rejection

# Life and death of an application



# Administrative pre-processing

- The staff at the office will check if your application fulfills all the formal requirements described in the call.
- Please read the call carefully to make sure that your application fulfills all the formal requirements for active consideration.
  - Submitted too late? You will receive a rejection.
  - Too long project description? The council will disregard the exceeding text (likely rejection).
  - PI forgets to attach CV/list of publications? Can lead to rejection.
- Any materials submitted to DFF after deadline will not be taken into consideration.

# External review

- For some instruments, international external reviews are used to supplement the council's assessment:
  - Review panels
  - Individual external reviewers
  
- Special aspects of external review in DFF
  - Reviews are advisory
  - The external reviewers know the identity of the applicants – and the applicants will be informed of the identity of the reviewers.
  - Applicants always receive a copy of the external review and the option to comment. The council includes these comments in the overall assessment.

# Cross-council allocation and interdisciplinary projects

- DFF encourages interdisciplinary projects
- The councils can always request an opinion from another council
- You can select which councils you wish to have your application assessed in
- The chairs allocate interdisciplinary applications to the most scientifically appropriate council in accordance with the applicant's wishes.



# The councils' assessment

- The council follows binding guidelines on disqualification
- Assessment criteria
  - Fulfilment of the instrument's objective
  - Scientific quality of the project
  - Scientific qualifications of applicant and participants
  - Feasibility
  - Publication and dissemination of results
- Other criteria
  - Will the project/activity benefit Danish research?
  - Does the project/activity include research education to a relevant extent?
  - Does the project/activity contribute to improve the mobility of researchers, nationally/internationally and – if relevant – between research institutions and the business community?



# Publication of grant recipients

- Approximately two weeks after the council meeting you will receive a preliminary notification of the council's decision via e-grant
- A full list of grant recipients will be published on the fund's website approx. four weeks after the council meetings
- Grant letters and rejection letters will be sent to applicants via the E-grant portal.
- The status on the portal will not change from "submitted" until publication of letters.
- Rejection letters will include a short and adequate explanation



# Questions?

- Inquiries regarding calls and application procedures
  - Phone: 7231 8200 between 10-14
  - E-mail: DFF-opslag@ufm.dk (usually answer within 24 hours)
  
- Please also visit our Facebook page  
<https://www.facebook.com/friforskning/>